



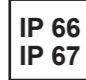
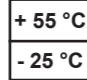
Sounder 105 dB (A) / 110 dB (A)

DS 5-SIL / DS 10-SIL



- integrated safety tough demands under industrial conditions
- to signal dangerous situations in safety-relevant application such as process and plant safety, e.g.
 - start-up warning
 - excess rotation speed warning
 - machine stop delay warning
- by means of integrated self-monitoring of the devices the normative required, regular inspection of warning devices is ensured
- the warning devices can be implemented in Safety Instrumented Systems (SIS) up to **SIL 2**

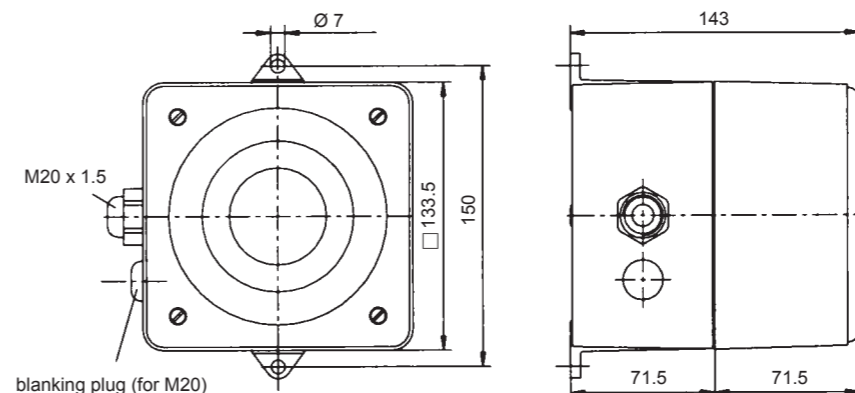
We would be more than happy to provide all safety-technical key data.

DS 5-SIL	DS 10-SIL	IP 66 IP 67	+ 55 °C - 25 °C
			
max. signal reception range	max. signal reception range	Protection system	Operating temperature

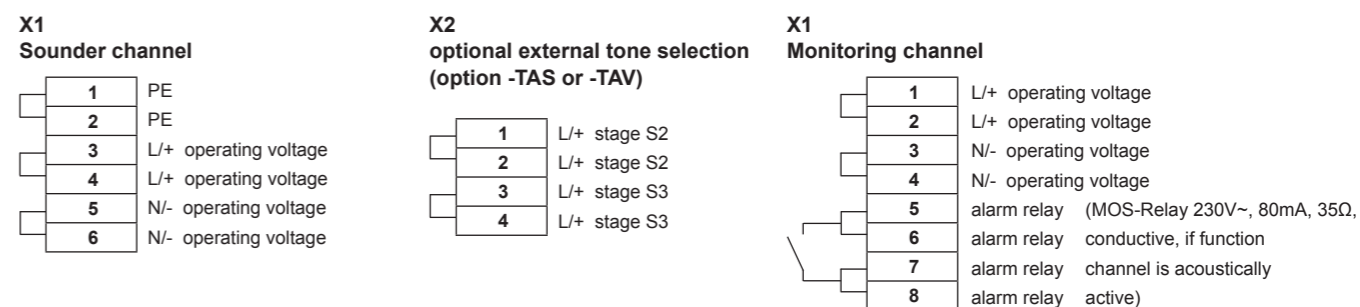
Electrical data	DS 5-SIL			DS 10-SIL		
	230 V AC	115 V AC	24 V DC	230 V AC	115 V AC	24 V DC
Rated voltage	230 V AC	115 V AC	24 V DC	230 V AC	115 V AC	24 V DC
Rated frequency	50 Hz / 60 Hz	50 Hz / 60 Hz		50 Hz / 60 Hz	50 Hz / 60 Hz	
Functional range	195 V – 253 V	95 V – 127 V	19 V – 29 V	195 V – 253 V	95 V – 127 V	19 V – 29 V
Rated current consumption	0.03 A	0.06 A	0.28 A	0.06 A	0.12 A	0.42 A
Diagnostics channel	power consumption	15 mA	15 mA	20 mA	15 mA	15 mA
	switching power	230 V / 80 mA				

Mechanical data	DS 5-SIL	DS 10-SIL
Sound pressure level	105 dB (A)	110 dB (A)
Alarm tones	32 tones (see alarm tone table page 135)	
Operating temperature	- 25 °C ... + 55 °C	
Storage temperature	- 40 °C ... + 70 °C	
Relative humidity	90%	
Protection system according to EN 60529	IP 66, IP 67	
Duty cycle	100%	
Material	die-cast aluminium GD-Al Si12 Cu	
Surface coating	epoxy resin paint RAL 3000, flame red	
Cable bushing	2 x M20 (1 x chrome-plated brass cable fitting, 1 x chrome-plated brass blanking plug)	
Clamping range of the cable fitting	8 – 12 mm	
Connecting terminals	max. 2.5 mm ²	
Weight	AC	2.15 kg
	DC	1.95 kg

Dimensions



Connection diagram

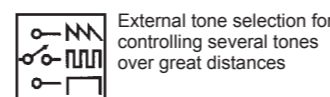


Ordering details

Article numbers	DS 5-SIL			DS 10-SIL				
	Version	Rated voltage	230 V AC	115 V AC	24 V DC	230 V AC	115 V AC	24 V DC
Standard			231 06 10 0 601	231 06 15 0 601	231 06 80 0 601	231 11 10 0 601	231 11 15 0 601	231 11 80 0 601
TAS (external tone selection via closed function of the control voltage)			231 06 10 0 603	231 06 15 0 603	231 06 80 0 603	231 11 10 0 603	231 11 15 0 603	231 11 80 0 603

Article numbers for other voltages and versions on request

Options / accessories



External tone selection for controlling several tones over great distances



GOST

Conformity to standards

The sounders fulfill the requirements to the functional safety according to:

- EN 61508 Functional safety of electrical/electronic/programmable electronic safety-related systems
- EN 61511 Functional safety - Safety instrumented systems for the process industry sector

The devices can be used in safety related control systems in accordance with the following standards:

- EN ISO 13849-1 Safety of machinery - Safety related parts of control systems – part 1
- EN 62061 Safety of machinery - Functional safety of electrical/electronic/programmable electronic safety-related systems

The devices conform to the following standards:

- EN 61310-1 Safety of machinery - Indication, marking and actuation - part 1: Requirements for visual, acoustic and tactile signals
- EN ISO 7731 Ergonomic – alarms for public areas and workplaces – acoustic alarms
- EN 981 Safety of machinery - System of acoustic and visual alarm signals and information signals
- DIN 33404-1 Alarms for workplaces, uniform emergency signal
- ISO 8201 Acoustics - Audible emergency evacuation signal